

specifications

The medical gas outlet shall be an Amico Alert-1 series.

Outlets shall be manufactured with a 6 - 1/2" [165 mm] length type "K" 1/2" [12.7 mm] outside diameter (3/8" nominal) size copper inlet pipe stub, which is silver brazed to the outlet body. The body shall be of 1 - 5/16" [33 mm] diameter, one piece brass construction. For positive pressure gas services, the outlet shall be equipped with a primary and secondary check valve and the secondary check valve shall be rated at a maximum of 200 psi [1,379 kPa] in the event the primary check valve is removed for maintenance. Outlet bodies shall be gas specific by indexing each gas service to a gas specific dual pin indexing arrangement on the respective identification module.

A large color coded front plate shall be used for ease of gas identification and aesthetic appeal.

With the back rough-in mounted the outlet shall adjust from 3/8" [10mm] up to 1" [25 mm] variation in wall thickness.

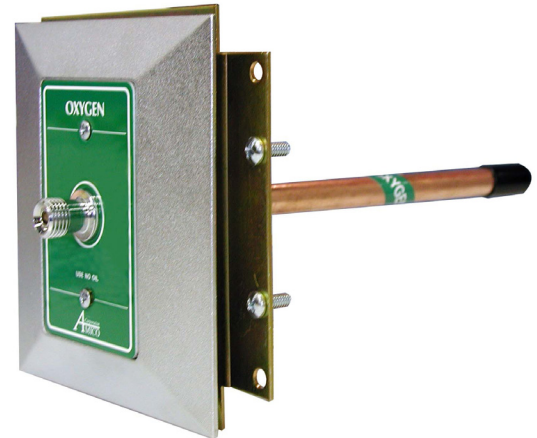
The latch-valve assembly shall be Ohmeda Diamond™ Quick Disconnect, Chemetron Quick Disconnect, Puritan-Bennett Quick Disconnect, or DISS depending on the type ordered.

All M.R.I. outlets are manufactured from nonferrous materials.

All outlets shall be cleaned and degreased for medical gas service, factory assembled and tested.

All outlets are UL Listed and CSA approved.

Amico products comply with NFPA-99.



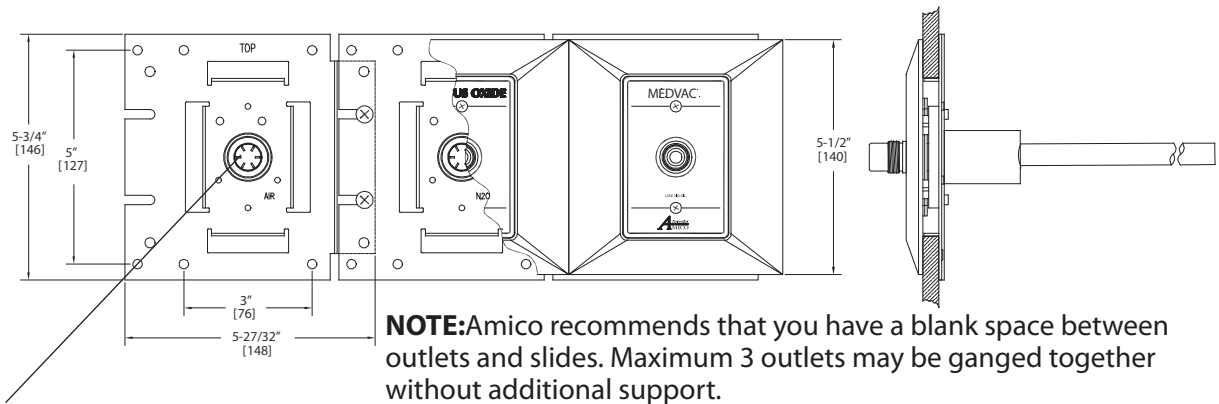
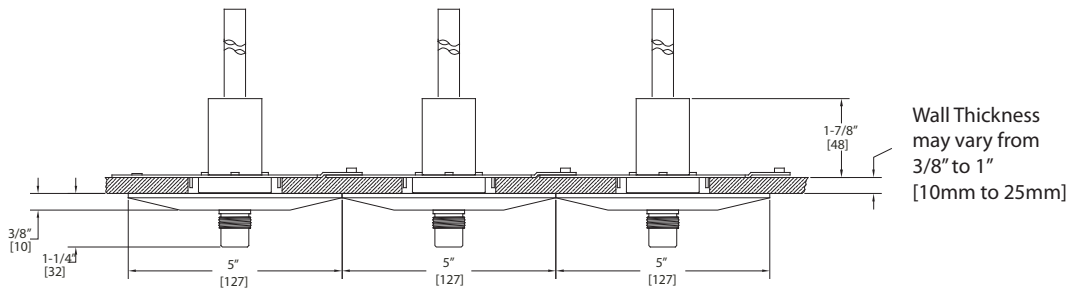
features

- Flow rate exceeds the requirements of NFPA and CSA
- Accepts quick connect gas specific adapters, or DISS Adapters depending on which front assembly is ordered
- 100 % Hydrostatic testing of each outlet and cleaned for medical gas service
- Indexed to eliminate interchangeability of gas services
- Up to 1" [25 mm] wall thickness adjustment
- Universal rough-in assembly to accept Quick Connects or DISS front adapters. (Can be interchanged at any time)
- Outlets are also available for M.R.I. use

project

ceiling outlet - DISS or quick disconnect

inch
[mm]



¹**NOTE:** For CSA/ISO, suction inlets are not supplied with a secondary check valve. A pressure plug is provided for testing purposes, rated at 150 psi [1,034 kPa].

model numbers

DIS = DISS
QD = OHMEDA compatible
CH = CHEMETRON compatible
PB = PURITAN-BENNETT compatible

O-DISCEI-L-XXX

The L defines the language:

U = English (NFPA) Oxy, Air, Vac and WAG only
E = English (CSA/ISO)
F = French (CSA/ISO)
S = Spanish (NFPA)

The XXX defines the Gas:

Oxygen	=	OXY
Medical Air	=	AIR
MedVac ¹	=	VAC
Nitrous Oxide	=	N2O
*Nitrogen	=	NIT
**Carbon Dioxide	=	CO2
Waste Anesthetic Gas Disposal (NFPA)	=	WAG
Anesthetic Gas Scavenging System ¹ (CSA)	=	AGS
Instrumental Air	=	INA

* = Available only in DISS

** = Not available for Puritan-Bennett

Example:
English NFPA - DISS, Oxygen = O-DISCEI-U-OXY

¹Please see note above

Typical Ceiling Outlet Set Up



NOTE: Hose & Hose Retractor are sold separately