

# Medical Check Valves

## General Specifications:

Valves are designed for working pressures of up to 300 psig. The body is field removable for servicing without cutting or disassembling of lines. All valves are supplied clean and prepared for oxygen service as per CGA G-4.1. Valves are capped and packaged in a polyethylene bag to keep them clean. Valves are provided with type-K copper tube extensions for connections on the pipeline.

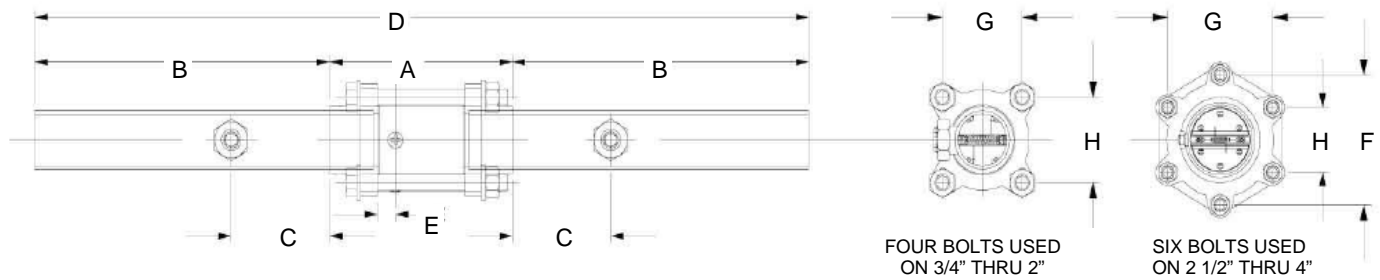
## Features:

- Cleaned for medical gas service
- 3-Piece design for ease of maintenance, as required by NFPA 2012
- Individually capped and packaged
- Dual gauge port design
- 100% hydrostatically tested
- Sizes 1/2" to 4"
- Highest CV possible
- Type K copper extensions



## Statement of Warranty

Patton's Medical warrants all Products, to be free of defects in material and workmanship under normal use for a period not to exceed twenty-four (24) months from date of shipment..

**Technical Specifications:**


Valve Size	Part Number	A	B	C	D	E	F	G	H
1/2"	CVPM-DPS-050	3.21	6	2	15.21	.33	-	1.43	1.43
3/4"	CVPM-DPS-075	3.21	6	2	15.21	.33	-	1.43	1.43
1"	CVPM-DPS-100	3.72	6	2	15.72	.33	-	1.62	1.62
1 1/4"	CVPM-DPS-125	4.06	6	2	16.06	.4	-	2	2
1 1/2"	CVPM-DPS-150	4.45	6	2	16.45	.4	-	2.25	2.25
2"	CVPM-DPS-200	5.18	6	2	17.18	.4	-	2.86	2.86
2 1/2"	CVPM-DPS-250	6.1	6	2	18.1	.5	4.94	4.28	2.47
3"	CVPM-DPS-300	6.76	6	2	18.76	.5	5.51	4.77	2.75
4"	CVPM-DPS-400	8.56	6	2	20.56	.5	7.46	6.46	3.73