

# Emergency Oxygen Supply Connection - Low Pressure

## General Specifications:

The Emergency Oxygen Supply Connection shall be a Patton's Medical series.

The Emergency Oxygen Supply Connection complies with NFPA 99. The emergency oxygen supply connection will provide a connection for an auxiliary source of oxygen to the hospital's main oxygen pipeline for emergency or maintenance situations. The front of the enclosure will be labeled "Emergency Oxygen Supply Connection".

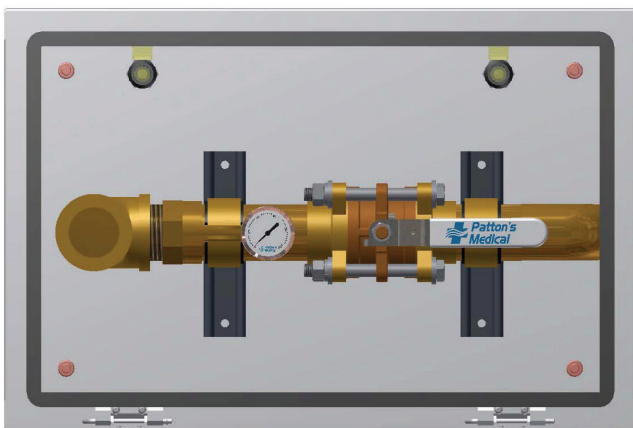
The inlet will consist of a 1" ball valve with 1/2" or 1" NPT connections or a 2" ball valve with 1 1/2" or 2" NPT connections and a pressure gauge. The assembly will be housed in a weather-tight 14 gauge enclosure recessed mounted or surface mounted with a staple for padlocking with gray powder coating.

The recessed mounted enclosure is provided with a tubing extension thru the rear of the enclosure. The surface mounted enclosure is provided with a tubing extension from the right side of the enclosure.

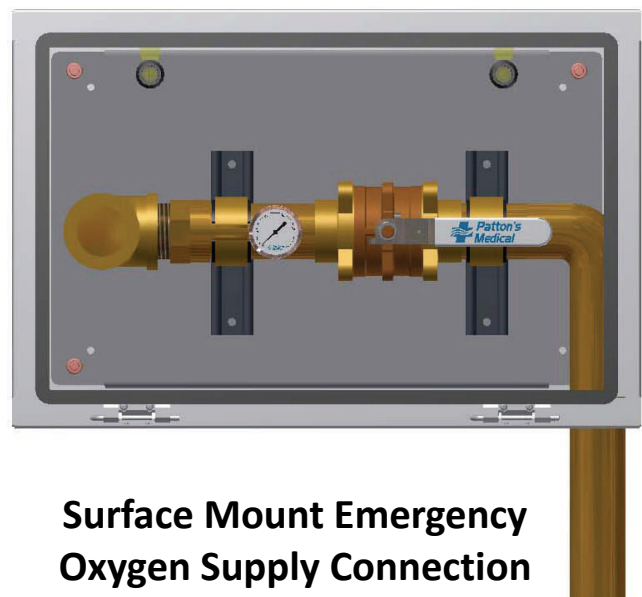
The Emergency Oxygen Supply Connection is to be connected per NFPA 99 (see piping schematic) Check valves and relief valves listed are required to complete the installation.

The relief valves are preset at 75 PSI. The relief valves are brass and are cleaned for oxygen use. Relief valves automatically reseal after opening for a positive seal.

The check valves will have a bronze body and are supplied with extensions on each end. Check valves are cleaned for oxygen.

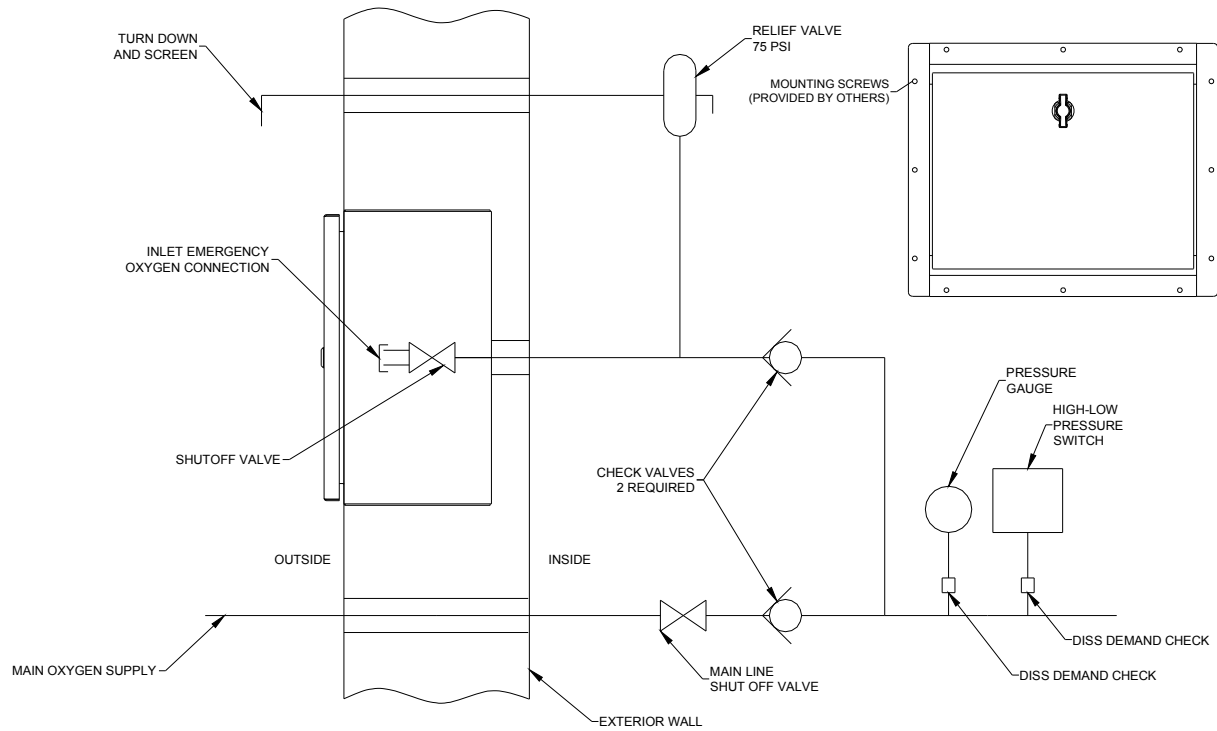


**Recessed Emergency Oxygen  
Supply Connection**

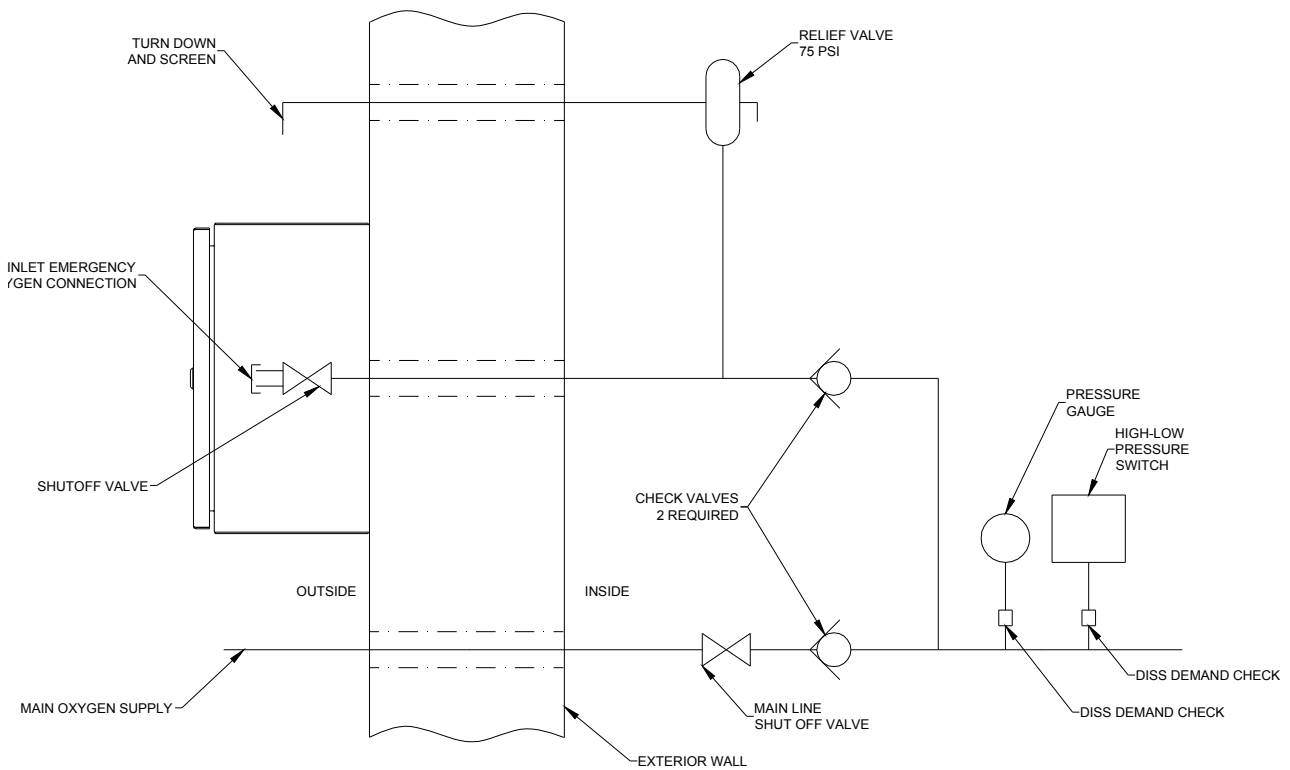


**Surface Mount Emergency  
Oxygen Supply Connection**

**Technical Specifications:**



**PIPING SCHEMATIC (RECESSED MOUNT)**



**PIPING SCHEMATIC (SURFACE MOUNT)**

**Technical Specifications:**

## Model Numbers

<b>Emergency Oxygen Supply Connection Low Pressure</b>	
<b>Part Number</b>	<b>Description</b>
<b>EOSC-LPR1</b>	1" Recessed Mount Oxygen Fill Station, 1/2" and 1" NPT Inlets
<b>EOSC-LPS1</b>	1" Surface Mount Oxygen Fill Station, 1/2" and 1" NPT Inlets
<b>EOSC-LPR2</b>	2" Recessed Mount Oxygen Fill Station, 1 1/2" and 2" NPT Inlets
<b>EOSC-LPS2</b>	2" Surface Mount Oxygen Fill Station, 1 1/2" and 2" NPT Inlets

## Model Numbers

<b>Check Valves with Extensions/Relief Valve</b>		
<b>Part Number</b>	<b>Size</b>	<b>Description</b>
CVPM-DPS 075	3/4"	Check Valve with Extension
CVPM-DPS 100	1"	Check Valve with Extension
CVPM-DPS 125	1 1/4"	Check Valve with Extension
CVPM-DPS 150	1 1/2"	Check Valve with Extension
CVPM-DPS 200	2"	Check Valve with Extension
PRV-075	1/2"	Relief with Pipeaway Adapter