

Ceiling Outlets

General Specifications:

The medical gas ceiling outlet shall be Patton's Medical O1 series. The outlet shall be UL® Listed, NFPA® 99 compliant cleaned for medical gas service and be pressure tested. Each outlet shall have less than 3 psi (21 kPa) pressure drop through the outlet @ 120 L/min, and 50 psi (345 kPa) inlet pressure. For outlets providing positive pressure gas, the outlet shall be equipped with a primary and secondary check valve, the secondary check valve shall be rated for 200 psi (1,379 kPa) allowing the primary check valve to be removed for service without isolating the entire zone.

The ceiling outlets shall have a gas specific back body with steel mounting plate, which allows outlets to be ganged together with a center-line spacing of 5" (125). Each back body shall be equipped with a 6-1/2" (165 mm) length type "k" copper pipe stub which is brazed to the outlet body. The outside diameter of the copper pipe stub shall be 1/2" (12.7 mm).

Outlet bodies shall be gas specific by means of a gas specific indexing pin arrangement. The indexing pins shall be arranged in such a way as to connect the latch-valve assembly only with the specific matching gas back body, preventing interchangeability of gas services.

The latch-valve assembly, which by means of color coding and wording shall identify the specific medical gas service provided by the outlet and shall accept gas specific adapters.

For aesthetic appeal each outlet shall include a one piece gray trim plate. The trim plate shall be constructed of high impact, Cycloy® .

The ceiling outlet can accommodate various finished wall thicknesses from 3/8" (10) to 1-1/4" (32). Equipment is manufactured in an ISO® 9001 registered facility.

Features:

- DISS specific adapters
- Pin indexed to prevent interchangeability of gas service
- Each outlet is cleaned for medical gas service and pressure tested
- Less than 3 psi (21 kPa) pressure drop though the outlet at 120 L/min and 50 psi (345 kPa) inlet pressure
- Gas specific back bodies accept DISS front identification bodies
- Outlets can be adjusted up to 3/4" (19 mm) in mounting plate thickness
- Adapters are available from Patton's Medical
- Outlets are also available for M.R.I. use

DISS Types Shown

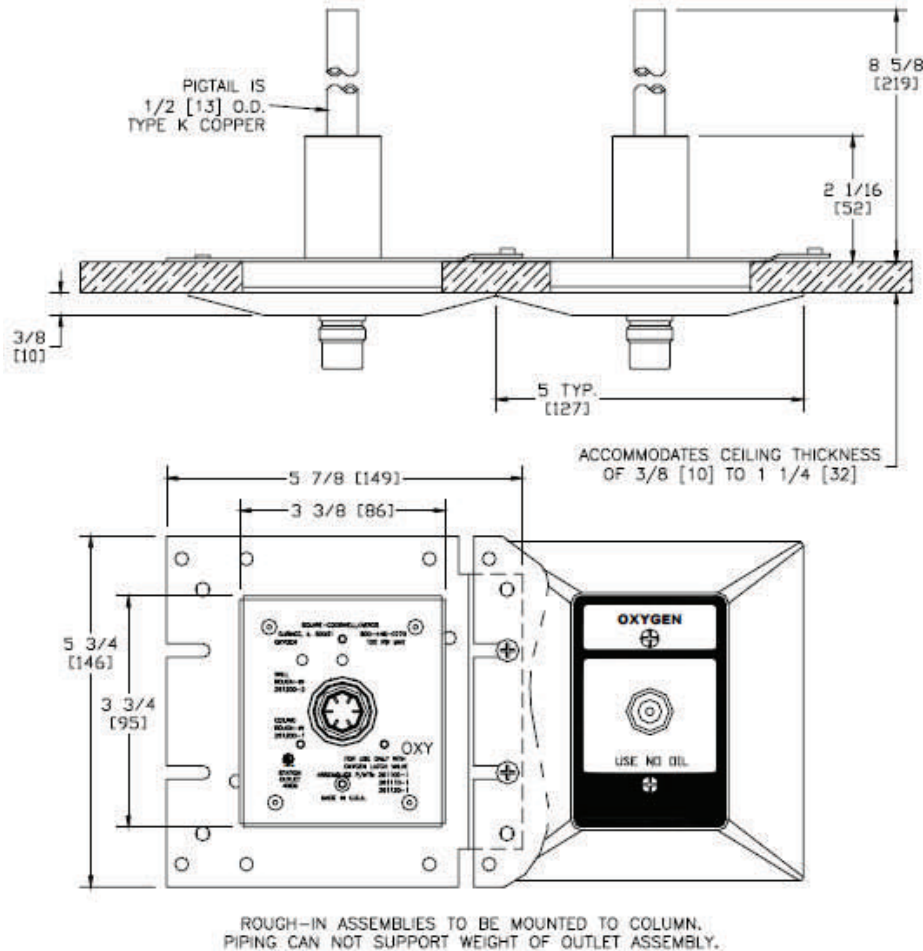


*Rebuild kits Available



Technical Specifications:

DISS Shown



Model Numbers

O1-DICEI-XXX-X

Example: D.I.S.S Ceiling Air NFPA = O1-DICEI-AIR-N

The Letter "DI" Defines the Type:
D.I.S.S = DI

The Letter "CEI" Defines the Type:
Ceiling Outlet = CEI

The Letter "X" Defines the Type:
Cycloxy = N

The Letter "XXX" Defines the Type of Gases:

Oxygen	= OXY
Medical Air	= AIR
MedVac	= VAC
Nitrous Oxide	= N2O
Nitrogen	= NIT
Carbon Dioxide	= CO2
WAGD (NFPA)	= WAG
Instrument Air (DISS Only)	= IA

M.R.I. Model Numbers

O1-DICEIM-XXX-X

Example: D.I.S.S Ceiling Air NFPA (M.R.I.) = O1-DICEIM-AIR-N

M = M.R.I. Compatible