

Emergency Supply Connection – Low Pressure

General Specifications:

The Emergency Supply Connection shall be a Pattons Medical series.

The Emergency Supply Connection complies with NFPA 99. The EOSC will provide a connection for an auxiliary source of oxygen to the hospital's main oxygen pipeline for emergency or maintenance situations. The front of the enclosure will be labeled "Emergency Oxygen Supply Connection". Other gases will be labeled appropriately.

The inlet will consist of either a 1" ball valve with ½"NPT or 1"NPT connection or a 2" ball valve with a 1 ½"NPT or 2"NPT connection and a pressure gauge. The assembly will be housed in a weather-tight 14 gauge enclosure that is either recessed mounted or surface mounted. The enclosure will have a staple for padlocking and have a gray powder coated surface.

The recessed mounted enclosure is provided with a tubing extension through the rear of the enclosure. The surface mounted enclosure is provided with a tubing extension from the bottom right side of the enclosure. Other exit points are available upon request. Both the front cover and ball valve are lockable.

The Emergency Supply Connection is to be connected per NFPA 99 (see piping schematic). Check valves and relief valves listed are required to complete the installation.

The relief valves are preset at 75 PSI. The relief valves are brass and are cleaned for oxygen use. Relief valves automatically reseal after opening for a positive seal. If another gas requires a different pressure, the PRV will be adjusted.

The check valve will have a bronze body and is supplied with extensions on each end. Check valves are also cleaned for oxygen use.

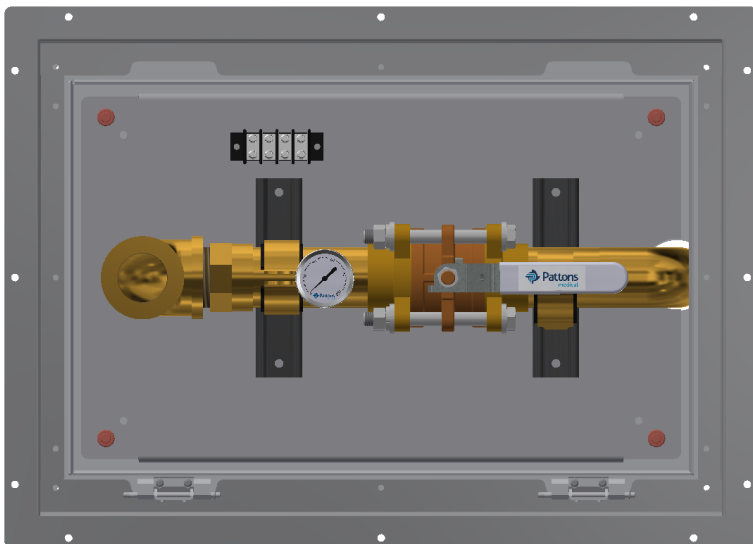
DIMENSIONS:

EOSC 1" Piping Enclosure: 16" wide x 12" high x 8" deep

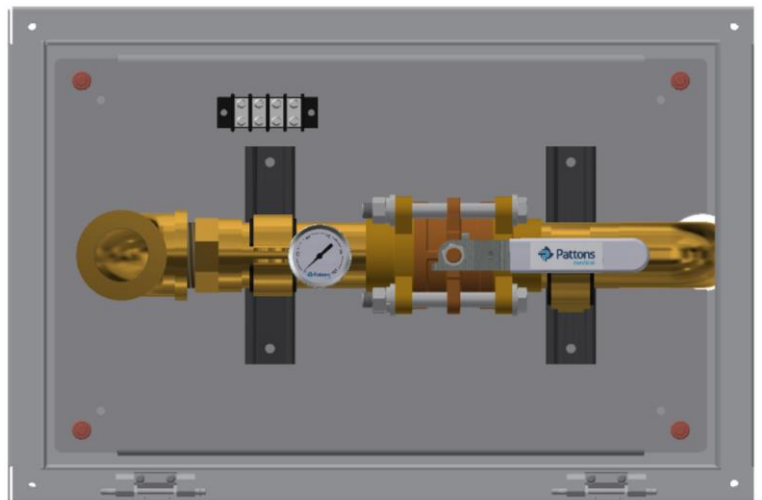
EOSC 2" Piping Enclosure: 24" wide x 16" high x 8" deep

Recessed Mounting adds 2.35" in width, 3" in height, and 1.08" in depth.

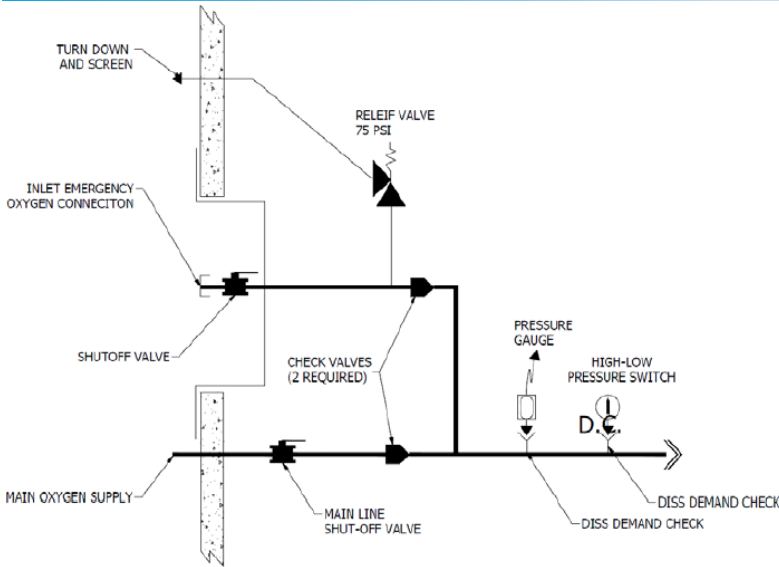
Recessed Emergency Oxygen Supply Connection (2" shown)



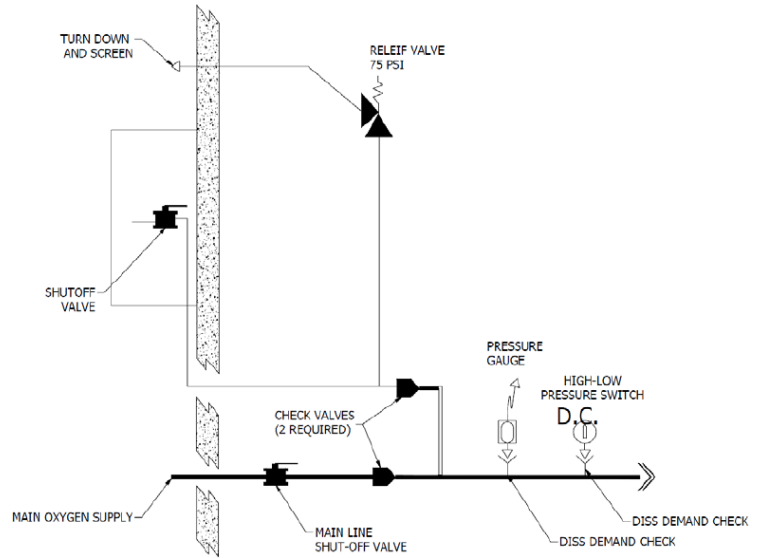
Surface Mount Emergency Oxygen Supply Connection (2" shown)



Technical Specifications:



Piping Schematic (Recessed Mount)



Piping Schematic (Surface Mount)

Model Numbers:

941-RRD-OXY-100-0000

941: ESC-Oxygen
942: ESC-Medical Air
943: ESC-CO2

R: Recessed Mount
S: Surface Mount

RD: Rear Discharge
SD: Side Discharge
BD: Bottom Discharge
TD: Top Discharge

OXY: Oxygen
AIR: Medical Air
CO2: Carbon Dioxide

Options (0: no option):

- 1: 1"NPT Inlet w/ 1/2"NPT bushing
- 2: 2"NPT Inlet w/ 1 1/2"NPT bushing

Additional Part Numbers

Check Valves with Extensions and Relief Valve (75psi)		
Part Number	Size (NPT)	Description
524-20-0001	3/4"	Check Valve with Extension
524-20-0002	1"	Check Valve with Extension
524-20-0003	1 1/4"	Check Valve with Extension
524-20-0004	1 1/2"	Check Valve with Extension
524-20-0005	2"	Check Valve with Extension
524-21-0000	1/2"	75psi relief valve w/ pipe away adapter

Statement of Warranty

Patton's Medical warrants all Emergency Supply Connections, to be free of defects in material and workmanship under normal use for a period not to exceed twelve (12) months from date of shipment